

Instructions for Accessing the Advanced Computing Facility Supercomputing Cluster at the University of Kansas

Contents

Instructions for Accessing the Advanced Computing Facility Supercomputing Cluster at the University of Kansas	1
Request an Account	3
Install Secure Shell Software on your Computer	3
Connect to the ACF Server Using the SSH Terminal Client	3
Open the Server Filesystem Using the SSH File Transfer Client.....	7
Notes on the ACF Server	8

Request an Account

To use the computing resources at the Advanced Computing Facility, you must first have an account. To request an account, email clusterhelp@acf.ku.edu.

Install Secure Shell Software on your Computer

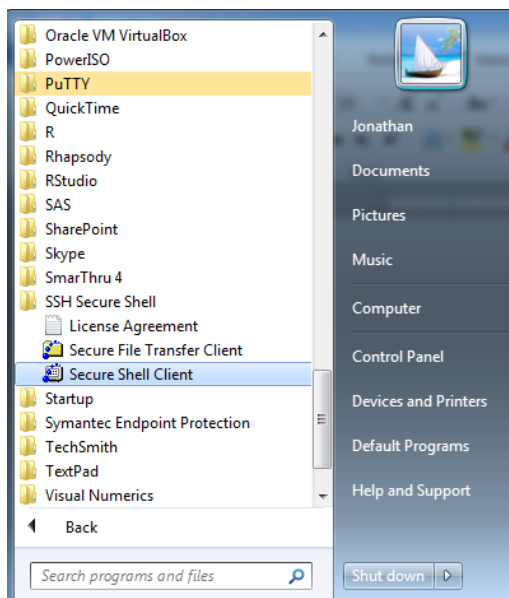
Connections to the ACF server are through the Secure Shell Protocol. Such connections involve a terminal window for executing commands (similar to the DOS prompt window) and a file-transfer window for uploading and downloading files from the server. This document uses the SSH Secure Shell program but others are available by searching Google for SSH programs.

1. Download the SSH Secure Shell program from <http://jonathantemplin.com/SSHSecureShellClient-3.2.9.exe>.
2. Double-click on the executable file to begin the installation.
3. Follow the prompts (the default options will work) through the end and click finish.

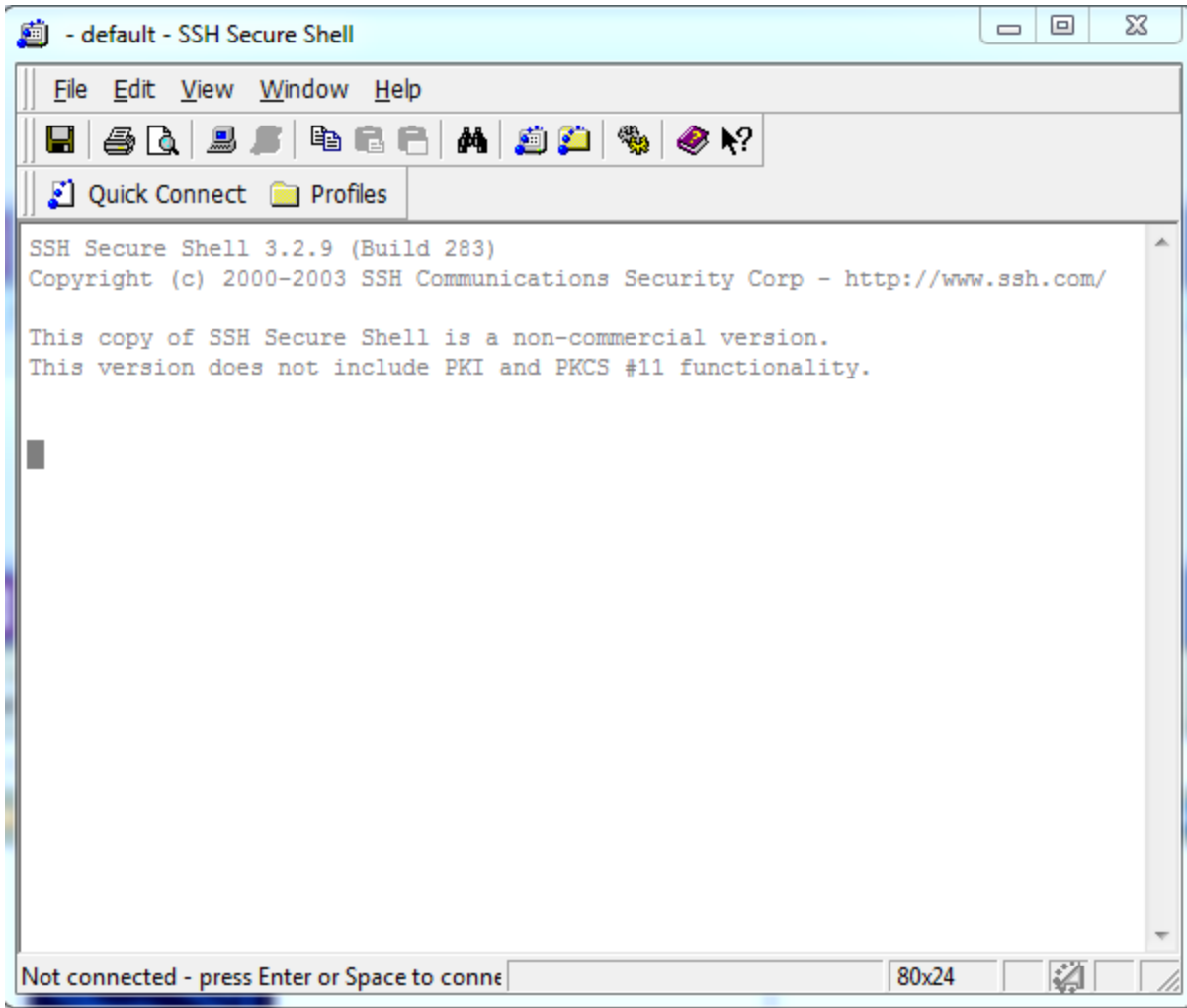
Connect to the ACF Server Using the SSH Terminal Client

NOTE: If you are off campus, you must first connect to KU Anywhere using a VPN client. To connect to the ACS server using the SSH Terminal Client:

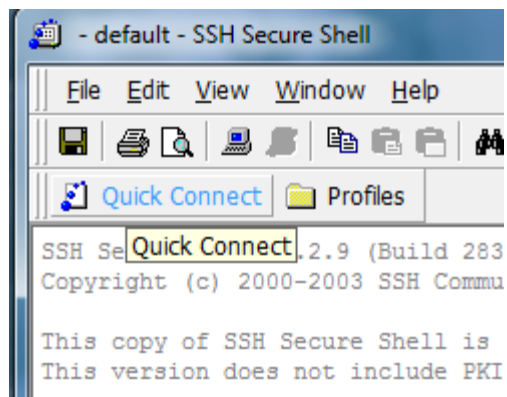
1. (In Windows) Start the SSH Terminal Client by going to Start...All Programs...SSH Secure Shell...Secure Shell Client



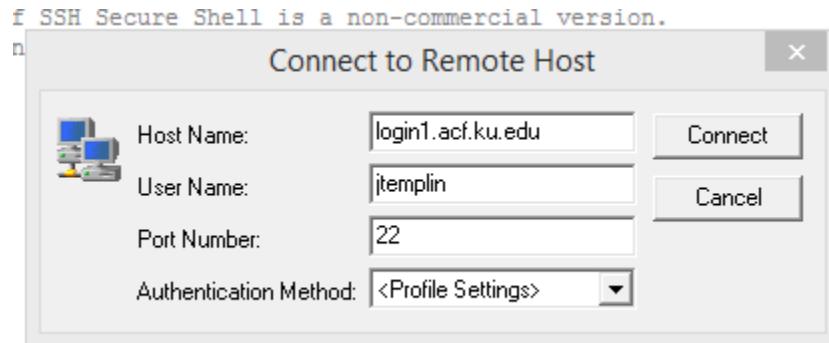
- The SSH Client terminal window now appears:



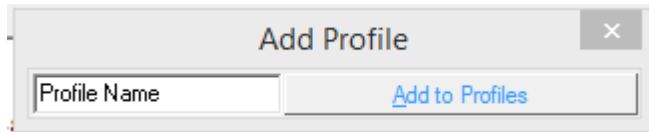
- Click on "Quick Connect":



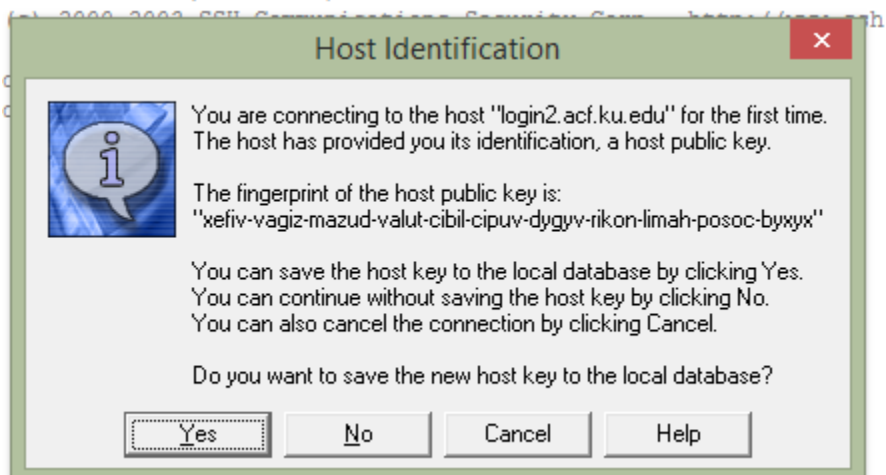
- In the “Connect to Remote Host” box, under Host Name put either login1.acf.ku.edu or login2.acf.ku.edu. Under User Name put your account username. Leave Port Number as 22 and do not select an Authentication Method. Click on the Connect button (you must be connected to the internet to continue). Note: this information is only requested the first time you connect and is saved in the ACF profile:



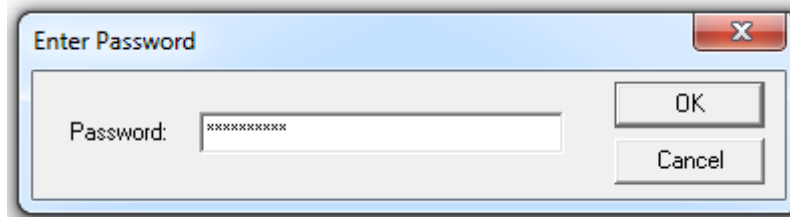
- In the Add Profile box that appears, type the word “ACF” and click “Add to Profiles”. This will allow you to skip step #4 for future connections to the server. Note: this box only appears for a few seconds and then disappears. If you would like to add the profile after the box disappears, click on Profiles...Add Profile and the box will reappear.



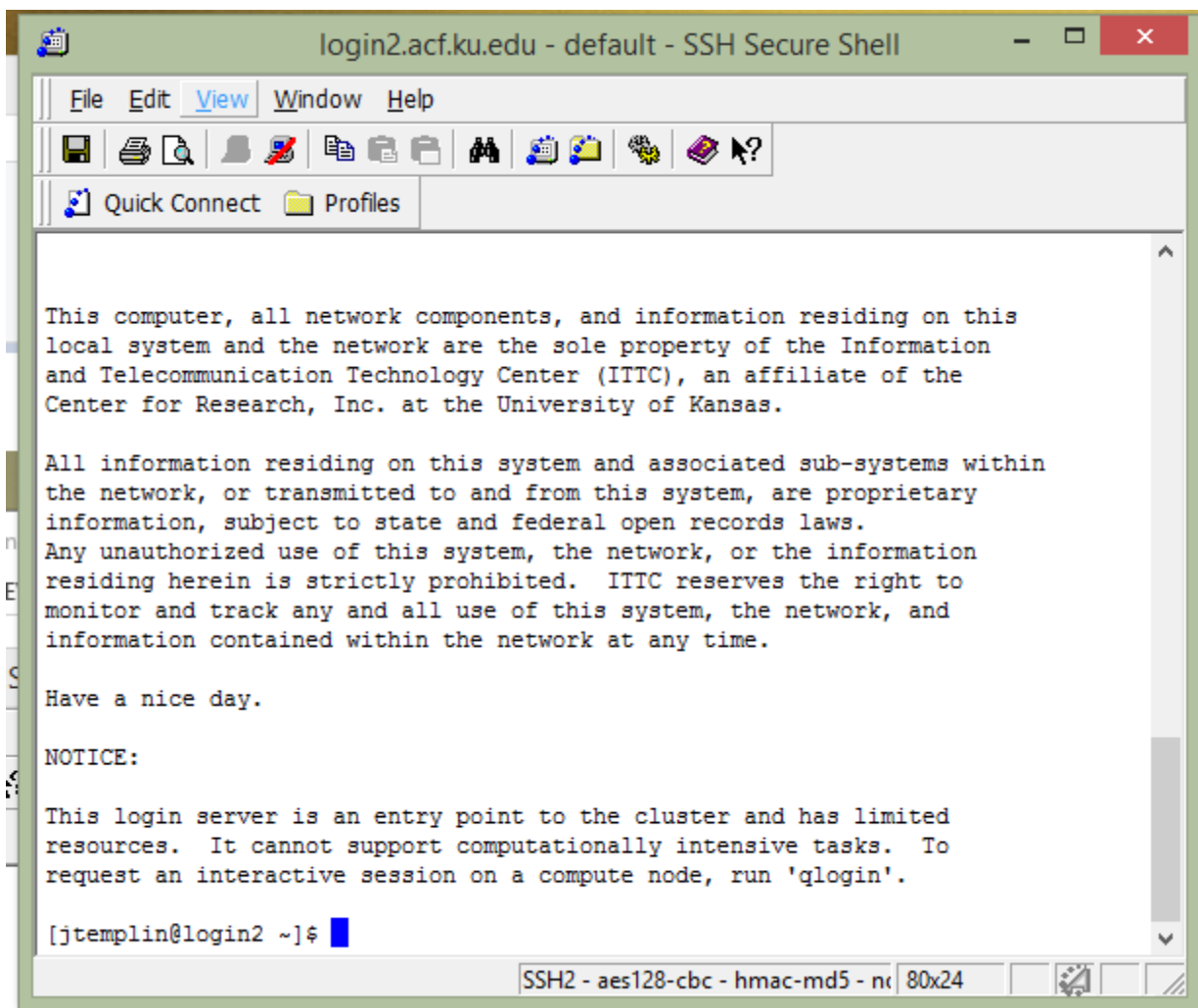
- If this is your first time connecting to the server you will be asked to identify the host machine. When you see the Host Identification box, press the Yes button. You will not see this again.



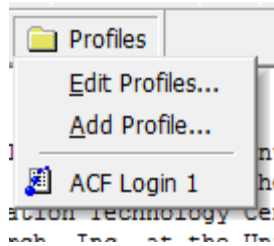
- Once the SSH program connects to the server, you will be prompted to enter your password.
Note: your password is unique to your ACF account and is not necessarily the password for your KU ID. **This prompt will appear all subsequent times you connect to the server:**



- Once connected successfully, you will see the following prompt in the SSH Client window:




- If you have created a profile (under step #5), then the next time you would like to connect to the server, click on Profiles...Tusker and you can omit step #4.

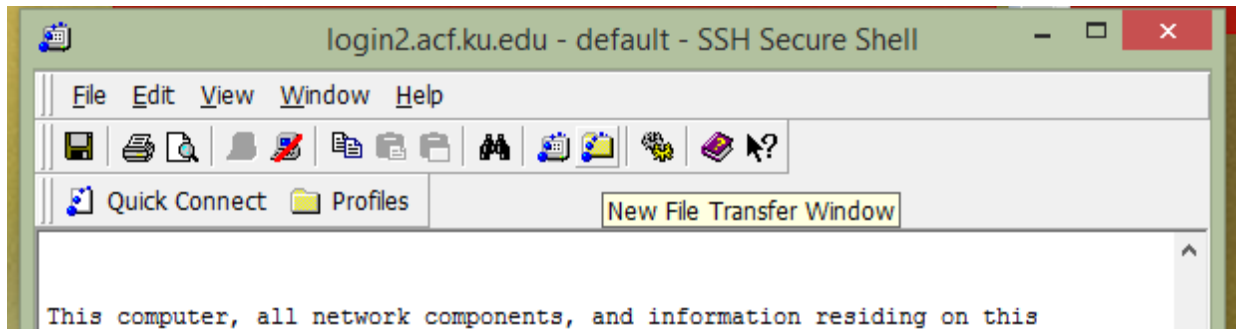


Open the Server Filesystem Using the SSH File Transfer Client

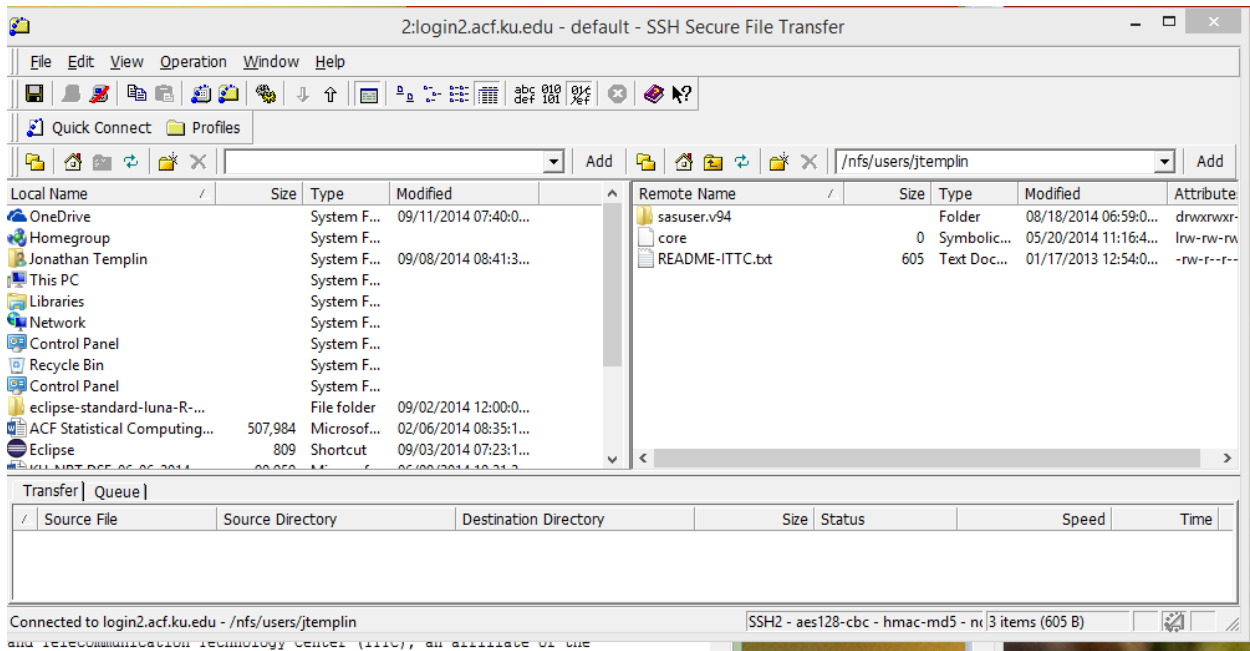
Once you have connected to the ACF server with the SSH Client, the next step is to connect with the SSH File Transfer Client. The SSH File Transfer Client is a menu-based program that uploads and downloads files to and from the ACF server.

- Connect to the ACFServer using the SSH Client Terminal (the previous step).

- Once connected to Tusker, click on the icon with a yellow folder underneath blue dots :  You can find this icon in the middle of the screenshot below.



3. Once pressed, a new window appears:



The window on the left is your computer. The window on the right is the home directory of your account on the ACF server. To move files from one to the other, first find the files by navigating through the folders and directories. After that, drag and drop from one to the other. You will see the file appear in the "transfer" box at the bottom of the screen.

Notes on the ACF Server

- Visit https://acf.ku.edu/wiki/index.php/Main_Page for a list of Tusker FAQs.
- The server uses Linux so all commands entered must be Linux commands. For a tutorial on Linux, visit <http://www.ee.surrey.ac.uk/Teaching/Unix/>.
- A few commonly used Linux commands:
 - To change your password from the initial version given to you by the ITTC type the passwd command
 - Note: you will not see any characters on the screen when you type your new password
 - ls – lists all files and folders in the current directory
 - pwd – lists the address of the current directory
 - cd /folder1/folder2 – changes directory to folder1/folder2